



Drawings collection

Zoomorphic/ anthropomorphic

German Fernandez

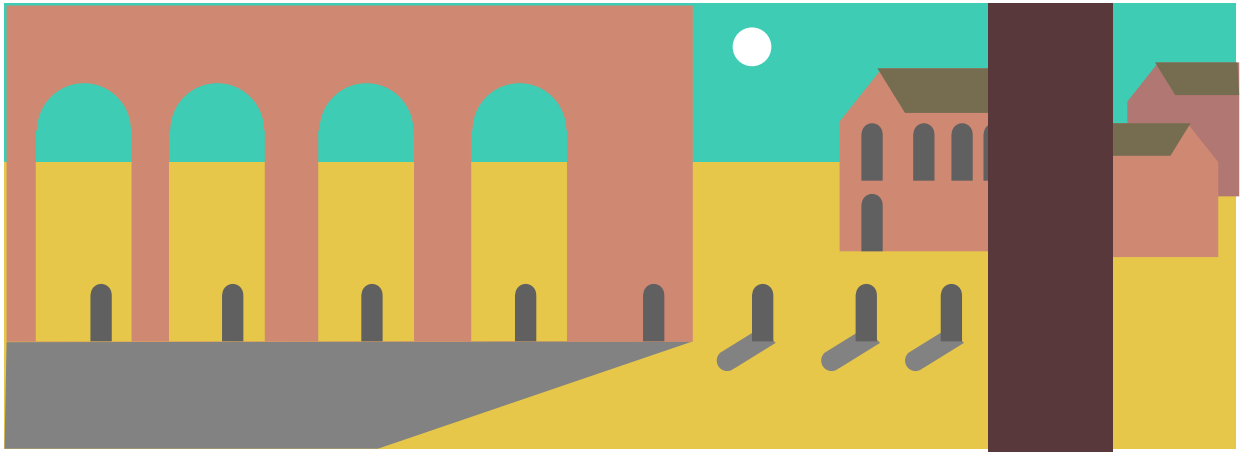
Zoomorphic/ anthropomorphic



I created four posters showing zoomorphic creatures, formed by geometric shapes of vibrant colours. These are explorations of the aesthetic found in precolumbian, Andean cultures. The symmetry hints to the duality, an important characteristic of the Andean world. The background, in contrast, depicts the hills around the capital, populated by the city, developed vertiginously in the second half of the century. These images propose a group of questions related to my personal experience but also to a wider context: What type of city is Lima? What means to be Peruvian? What means to be a Peruvian artist?.

Lima. The city and the Andean mythology cross their paths in the urban environment, as the

capital is redefined by the demographic explosion that has affected many urban cores around the world. And in that redefinition the very idea of belonging to the city dissolves in its heterogeneity: being of Lima means being of any part of Peru. Although the formal mentality of the terms still has to change, the reality already has. Lima is many cities in one city, and no one of them is the city our parents lived in, not anymore. To the ruins of wooden and dusty balconies falling from muddy walls, new neighbourhoods of brick are emerging, unplanned, unexpected, but real. But divisions are still part of the city. Are they the common divisions among different social sectors?. or are they something more?.





100

EFGIz89

EAR











